

# AP 02 - SAD 02

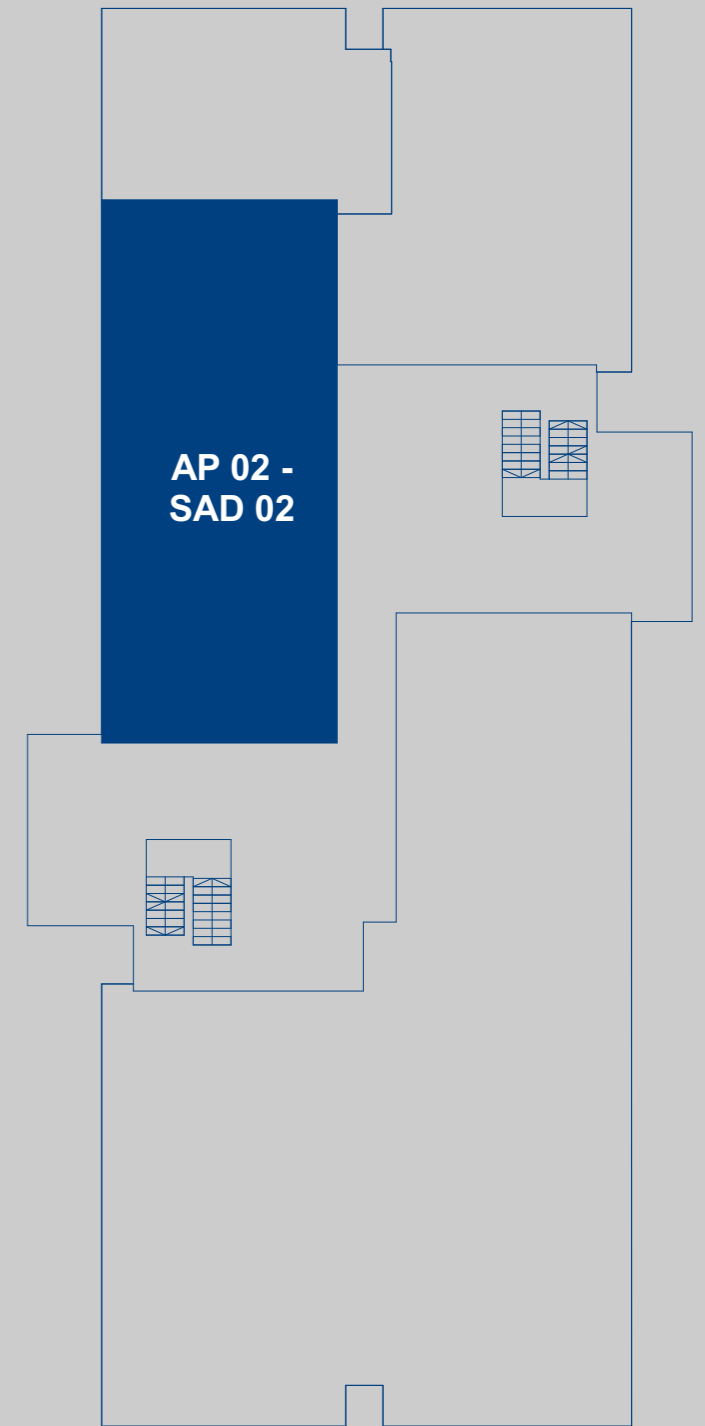
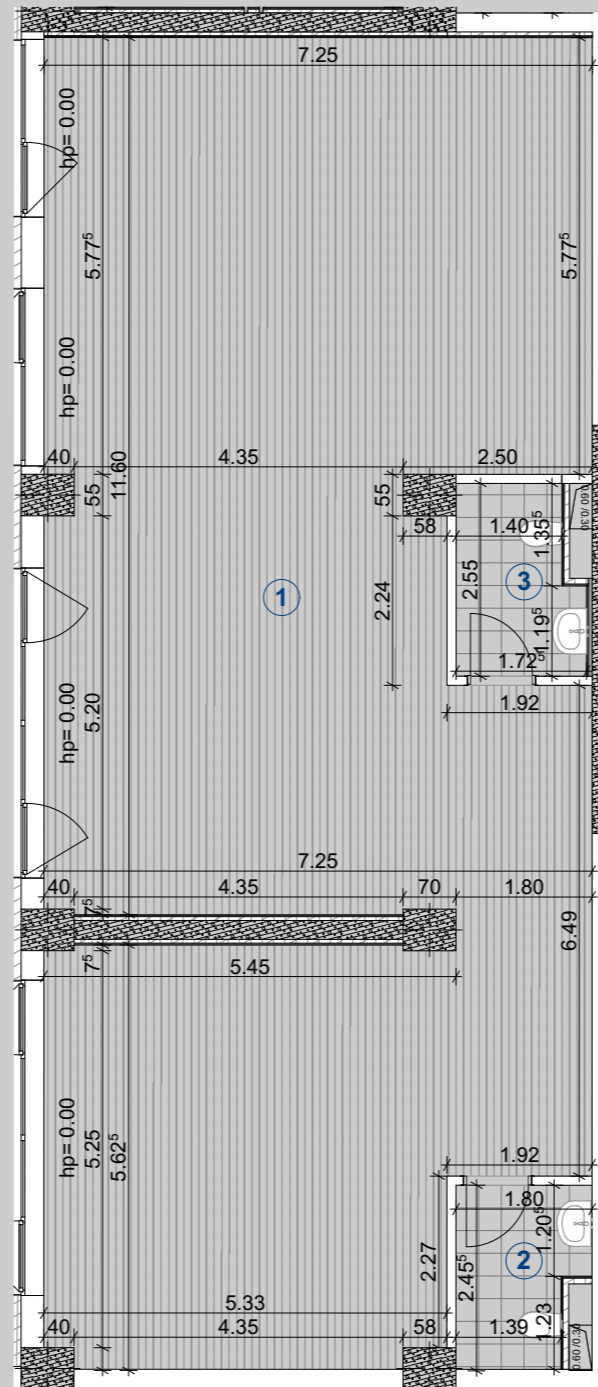
## SUPRAFETE UTILE:

- 1 - Spatiu Birouri: 117,56 mp
- 2 - Grup sanitar 2a: 3,89 mp
- 3 - Grup sanitar 2b: 3,95 mp

Total Su: 125,4 mp

## SUPRAFETE CONSTRUIE:

Total Sc: 139,74 mp



Parter